



18D

Croft Drive

Milton Park OX14 4RP

[///unicorns.eternity.braced](http://unicorns.eternity.braced)



18D Croft Drive is a character office within a small courtyard of buildings on the edge of Milton Park. The property has been comprehensively refurbished to include new M&E and shower facilities. The property is within walking distance of a number of Park amenities including the Park Club Gym with swimming pool and post office.

Office suites available from 1,107 sq.ft or can be combined to provide 3,793 sq.ft.

Specification



Comprehensively refurbished character offices



Located next to Park Club Gym and swimming pool



Fitted office options available



Allocated parking



New M&E and air conditioning throughout



EPC rating B



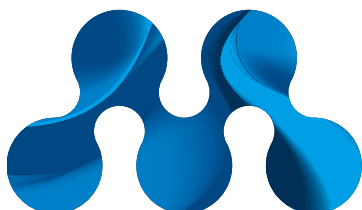
LED PIR lighting



New Shower facilities



Adjacent lawn area with picnic benches



Milton Park

Where life and work connect





Indicative Floorplans

- Key**
- Office
 - Meeting Room
 - Breakout

18D Ground Floor



18D Croft Drive

| | |
|-------------------|-------|
| 18D i sq.ft | 1,107 |
| 18D ii sq.ft | 1,285 |
| 18D iv sq.ft | 1,401 |
| Total (NIA) sq.ft | 3,793 |
| Total (NIA) sq.m | 352 |

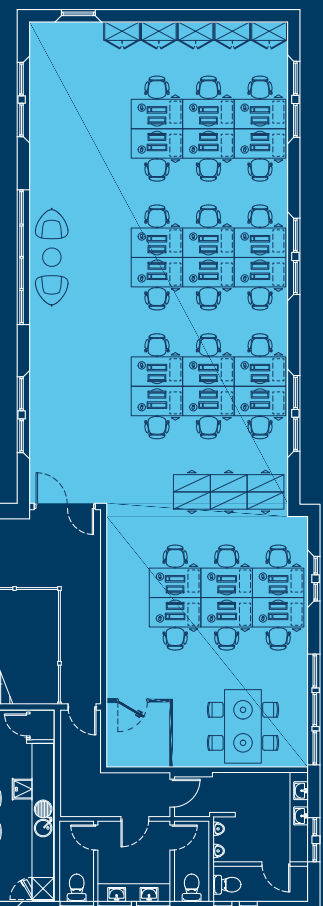
Units can be combined to provide larger premises for single occupation

18D First Floor

Suite iii



Suite iv



Milton Park – enabling your business to connect all the dots...

Scalable

2.8m sq.ft of lettable space in single ownership

Sustainable

Greener workplace initiatives and unrivalled public transport connectivity

Flexible

Simplified ten-day planning permission process

Sociable

A wide variety of amenities and on Park events

Capable

Dedicated on-site management team ensuring customers thrive

18D Croft Drive, Milton Park, Oxfordshire, OX14 4RP
[//unicorns.etscorp.com](http://unicorns.etscorp.com)

Pop-Out
Park Map



Get in touch with us...

MEPC

CBRE



Clare Fleet

Commercial Surveyor
clare.fleet@
FederatedHermes.com
+44 (0)1235 824114



Tom Booker

Commercial Manager
tom.booker@
FederatedHermes.com
+44 (0)1235 824100



Charlotte Reaney

Leasing Agent
charlotte.reaney@cbre.com
+44 (0)7841 684842



Tom Barton

Leasing Agent
tom.barton@cbre.com
+44 (0)7817 033078



MEPC
Bee House
140 Eastern Avenue
Milton Park
Oxfordshire
OX14 4SB

///feasted.cloud.honeybees

+44 (0)1235 865555
marketing@miltonpark.com
miltonpark.com



Misrepresentations Act 1967: This information has been obtained from sources believed reliable, but has not been verified for accuracy or completeness. You should conduct a careful, independent investigation of the property and verify all information. Any reliance on this information is solely at your own risk. MEPC Milton GP Ltd and its associated agents and their logos are service marks of MEPC Milton GP Ltd and its associated agents, Inc. All other marks on this document are the property of their respective owners. Use of these images without the express written consent of the owner is prohibited. September 2023.



WORLD
LAND
TRUST™

www.carbonbalancedpaper.com
CBP020619

Printed on recycled paper.

AN MEPC ASSET

